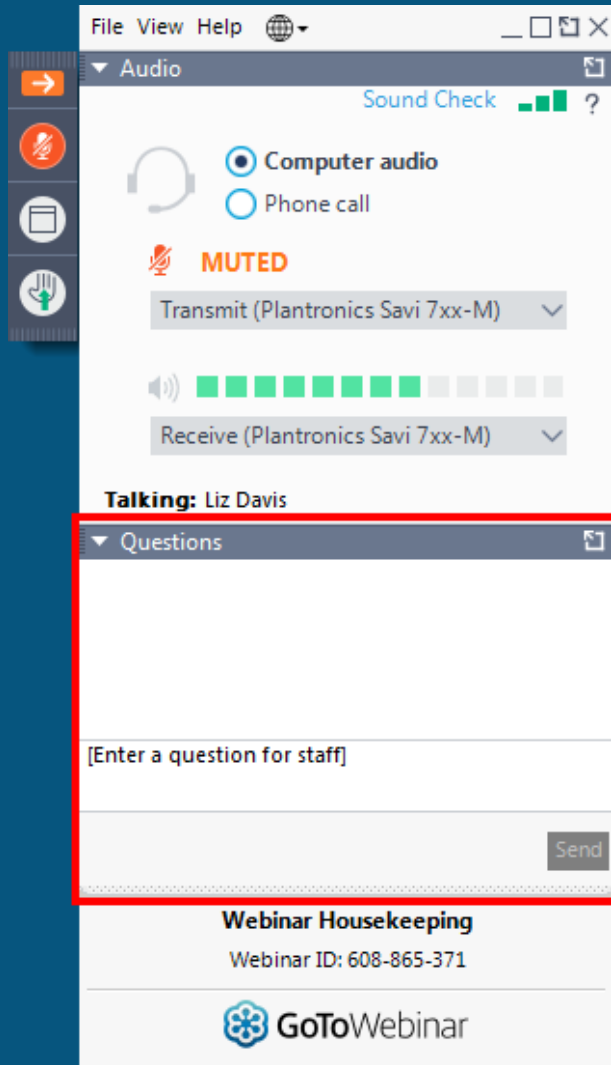


**Keeping Students Safe:  
Testing for COVID and Limiting its  
Spread in Schools**



August 19, 2021

# Housekeeping



At the end of the presentation, we will have a **Question and Answer** segment where we will try our best to answer all of your questions.

Please type your questions into the **Questions tab** of your Go To Webinar dashboard.

This is located on the **side of your screen**.

If you don't see the Webinar dashboard, it may be collapsed. Look for an **orange arrow** in the top right corner of your screen, click on that arrow and it will expand the dashboard.

# Today's Presenters

## Presenters:

- ▶ **John Deterding**, CEO, Maclean Group
- ▶ **Tony Campos**, COO, Maclean Group
- ▶ **Mike Smith**, Executive Vice President, AMI Health
- ▶ **Dr. D. Zebari**, Medical Director Testing and Vaccines, AMI Health
- ▶ **Robert Knouse**, Project Manager, Testing & Vaccination LAUSD, AMI Health
- ▶ **Paul Scialla**, CEO, Delos Air Purification
- ▶ **Jeremy Elias**, Founder & CEO, TrackMy Solutions

## Moderator:

- ▶ **James Collins**, Senior Director, Business Development, CSBA



# Maclean Health

CSBA's healthcare products and services partner; current holder of California's Statewide Face Mask Contract (CA Contract # 1-20-65-32JJ)

Air Purification

Testing and Vaccinations



- PARTNERS -





 **delos**™

Peace of Mind for  
Students, Educators,  
Parents and Staff through  
Delos Advanced Air Purification

Clean air is a necessity, not a luxury



Delos pioneered the world's leading certification platform for healthy buildings\*



82

countries

1.5+ billion

square feet enrolled

1,500+

clients

71

Fortune 500 enrolled

As of 1/26/21  
\*The International WELL Building Institute, Delos' wholly-owned subsidiary, administers and continues the development and market adoption of its WELL programs, including: the WELL Building Standard™, WELL Community™, WELL Portfolio™, and WELL Health-Safety Rating™. The figures above encompass all WELL programs.

and continues to advance the science of healthy buildings through a world class research platform



Founded as a Delos and Mayo Clinic collaboration

The first lab exclusively committed to researching the real-world impact of the indoor environment on human health and wellness.





## a proven solution

### Delos Advanced Air Purification



**99.99% reduction** of airborne viral load down to .007 microns\*



**removes 99.997%** of particles at **0.3 micron in size**, which is more efficient than HEPA Standard testing efficiency requirement\*\*



every device **individually tested** by the manufacturer to ensure superior performance



action-oriented response to help deliver health, safety and peace of mind for **students, educators and staff**



\*Individual particle sizes and specific particle size ranges may have different filtration efficiency rates  
\*\*EN-1822 testing of the Intellipure Compact device operating at 150 CFM

# BACK TO SCHOOL COVID-19 Testing & Vaccination Services

400,000+

COVID-19 Vaccinations

700,000+

COVID-19 Tests

## Comprehensive COVID Solutions for California School Boards Association

*“Our approach ensures cost-effective vaccinations and individual COVID testing and early detection of positive cases enabling California schools to open its doors knowing that its teachers, staff, and students are healthy,”* ~ Mike Smith, Executive Vice President, Operations, AMI Expeditionary Healthcare.



summerbio.



# Comprehensive COVID-19 Services



System Integration  
and Operations



Clinical Governance, Partnering and  
Delivery Expertise



Logistics and Support  
Services



summerbio.

No other companies of our size and stature have made such an impact responding to the current pandemic.

# AMI Expeditionary Healthcare has formed a strategic partnership with Maclean Health and SummerBio



**AMI Expeditionary Healthcare** provides medical services to international aid organizations, humanitarian concerns, the private sector and government agencies in a wide range of remote and challenging environments.

AMI has unparalleled experience in responding to global pandemics, including Ebola and COVID-19; with ongoing COVID-19 response across the U.S., Caribbean, Australia and Africa for clinical services and mass testing. AMI supply chain experts provide a broad range of urgent transportation, time-sensitive shipments with optimized solutions, as well as manage the vaccine distribution from ultra-cold storage to point of delivery (POD) sites.



**Maclean Health**, a Disabled Veteran Business Enterprise (DVBE), specializes in delivering critical supplies and rapid response to state procurement agencies and health systems. Maclean is the exclusive healthcare supplies vendor for the California School Board Association (CSBA), which represents 1,000 educational agencies across California for more than 6 million school-age children. In addition, Maclean currently holds the State of California Mask Contract.



**SummerBio** provides an affordable, rapid-result COVID-19 testing solution to the community. Their CLIA-certified lab is the top commercial lab for volume and turnaround time according to the California Department of Public Health's Turnaround Time Dashboard. Combining SummerBio's gold-standard RT-PCR assay (licensed from Columbia University) with automation enables increased processing speed, greater throughput and reduced human error. SummerBio will provide end-to-end screening and testing for asymptomatic, quarantine, and symptomatic students and staff utilizing the RT-PCR COVID-19 test with greater than 95% specificity.

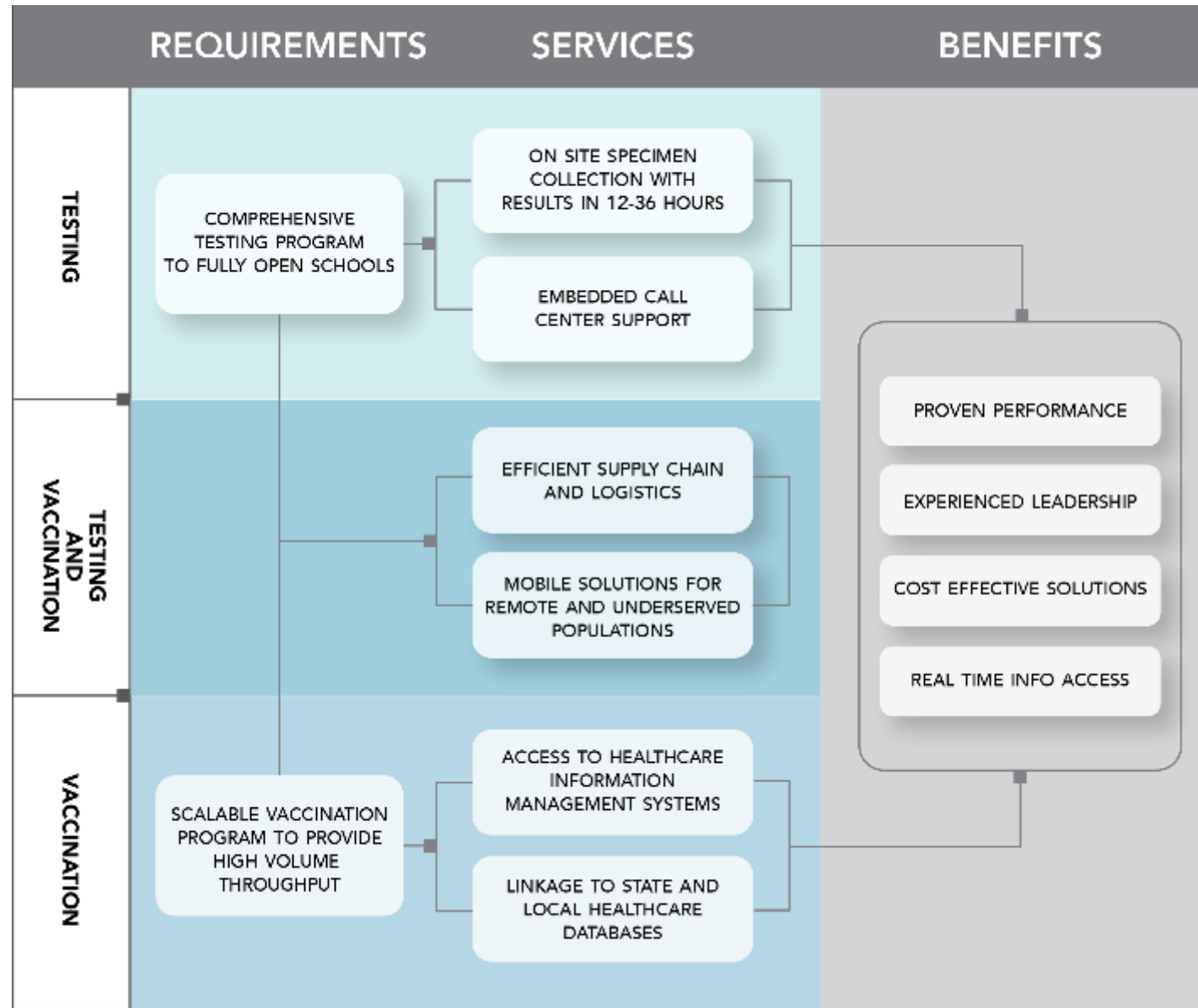
**Systems Integration, Operations,  
Clinical & Delivery Expertise**

**Logistics and Support**

**Laboratory Testing**

# Team Value Proposition

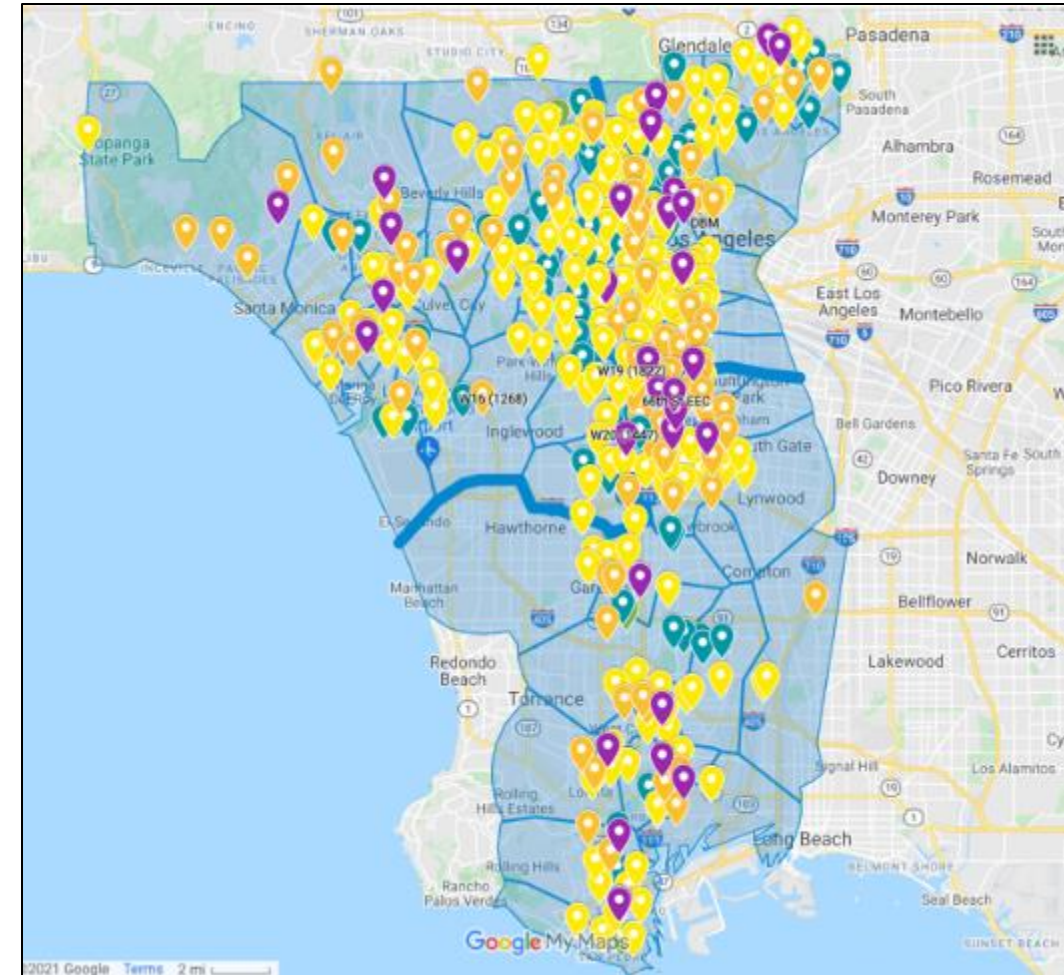
**AMI** has teamed with California based **Maclean Health** and **SummerBio** to deliver unique COVID testing and vaccination services. This team responds to requirements through adaptable, flexible, and scalable solutions deploying and supporting clinical teams rapidly across the state. AMI provides cost-effective options for schools and organizations for testing K-12 grades. Our mobile teams are able to reach remote areas or cover multiple sites in one day for both testing and vaccinations leveraging technology to provide real-time performance data and situational awareness accessible through cloud-based dashboards. Our robust COVID testing program management infrastructure is in place in California with a deep bench of experienced staff and a diverse multilingual workforce.



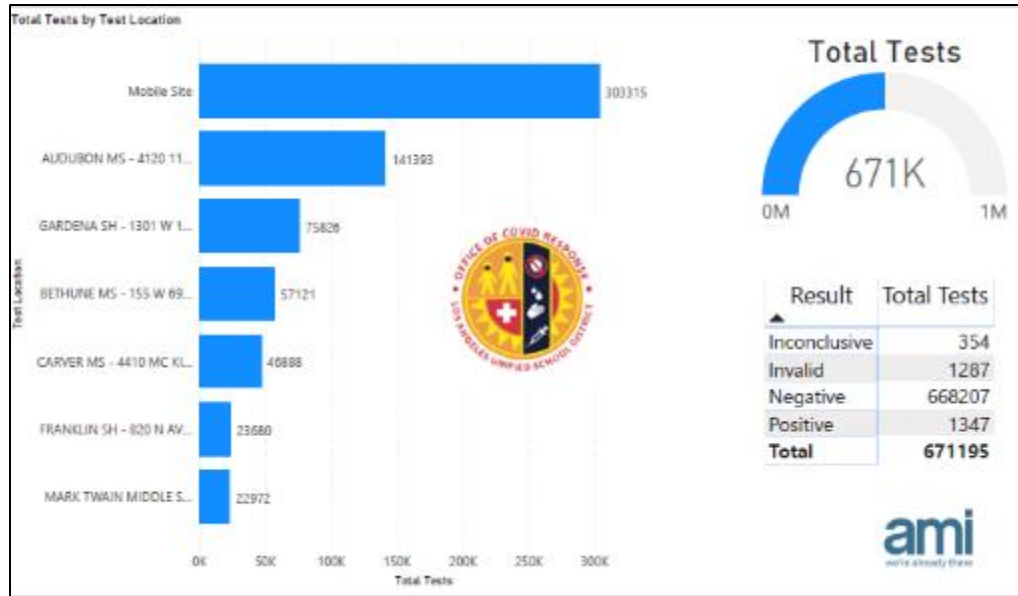
# Los Angeles County Unified School District COVID-19 Testing Overview

Since April 2021, **AMI** has been providing turnkey COVID-19 testing services to schools, static sites in the South, West, and Central districts and homebound individuals across the city for LAUSD. Services include procurement, logistics, staffing, human resources, travel and accommodation, clinical oversight, monitoring and evaluation, information technology, and training, as well as specimen lab testing by our partner, **SummerBio**. AMI has over 800 staff personnel in LA and has established a LA-based project management office (PMO) to support and provide oversight of 94 testing teams supporting staff, on-campus & homebound students once per week with approximately 250,000 tests conducted per week. **Maclean Health** collaborates with AMI as a strategic partner in the region, provides large volumes of critical PPE and materials to the AMI LAUSD team and serves as a logistics integrator ensuring project success.

*LAUSD school testing locations*



*LAUSD school testing real time tracking dashboard*





# Individual Testing vs. Pooled Testing

	AMI INDIVIDUAL PCR TESTING OPTION	POOLED TESTING OPTION
Technology	<ul style="list-style-type: none"> <li>Track testing status of students &amp; staff Electronic Medical Records</li> </ul>	<ul style="list-style-type: none"> <li>Unknown</li> </ul>
Clinical oversight & sample collection	<ul style="list-style-type: none"> <li>AMI trained staff with oversight</li> <li>Flexibility to test in school or add mobile teams for homebound individuals</li> </ul>	<ul style="list-style-type: none"> <li>School staff?</li> </ul>
Sample testing	<ul style="list-style-type: none"> <li>Each specimen individually tested</li> <li>Automated testing, reducing human error</li> </ul>	<ul style="list-style-type: none"> <li>Single test performed on a group of samples</li> </ul>
Result sensitivity	<ul style="list-style-type: none"> <li>Identifies positive individual samples</li> <li>Decreases risk of specimen mixing</li> <li>Reduced risk of false negatives</li> </ul>	<ul style="list-style-type: none"> <li>Retesting if positive sample</li> <li>Increased risk of false negatives</li> <li>Laboratory challenges</li> </ul>
Turnaround time	<ul style="list-style-type: none"> <li>24 hours or less for every individual</li> </ul>	<ul style="list-style-type: none"> <li>Longer times required to determine positive sample</li> </ul>
Benefit	<ul style="list-style-type: none"> <li>Fast, reliable, accurate detection of individual COVID-19 positive cases</li> <li>Comprehensive solution for collection, testing, and tracking testing for school</li> </ul>	<ul style="list-style-type: none"> <li>Cost effective method for population screening and resource-restricted settings</li> </ul>

July 12, 2021  
 State of California—Health and Human Services Agency  
 California Department of Public Health (CDPH)  
 To: All Californians  
 Subject: K-12 school-based COVID-19 testing strategies for school year 2021-22

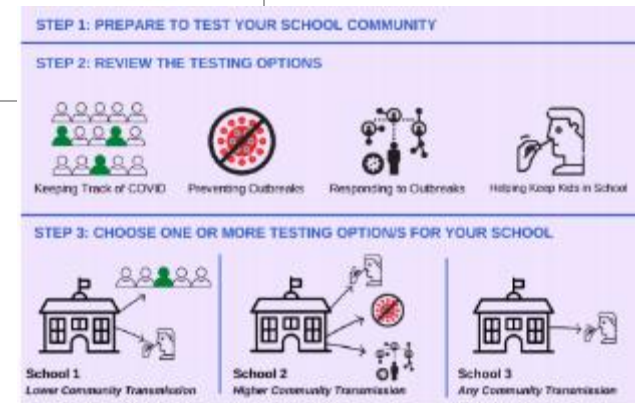
**Overview**

High vaccine uptake state-wide and safety precaution measures for COVID-19 allow schools to plan for full in-person instruction for students of all ages for the upcoming school year. Although vaccines are now widely available and vaccinated peoples are less likely to be infected with or transmit COVID-19, vaccines are not yet available for students 11 years old and younger. In addition, not all students and staff who are eligible for vaccination have been vaccinated. This highlights the continued need for proven COVID-19 prevention strategies, including testing unvaccinated peoples in school communities. Therefore, COVID-19 testing in K-12 schools remains a powerful tool for preventing transmission of COVID-19. To learn about your county's vaccination rates (and case rates), see the [CA COVID-19 website](#) and the [CDC website](#).

Both the California and Federal Governments have invested substantially in testing infrastructure to support schools. This allows schools to be prepared for changes in pandemic dynamics, including whether community outbreaks, a change in the virus that increases cases, or limitations in vaccine effectiveness or uptake.

This document outlines testing options and approaches for schools to consider implementing with their school communities. It will likely be very helpful for LEAs to prepare for the 2021-22 school year by signing up for school-based testing, which can provide maximal flexibility for any pandemic shifts, and can allow for optimized in-person learning time under the K-12 Schools Guidance. The three-step process is displayed in Figure 1.

*What makes the most sense for your school?*





# 2021 COVID-19 Solutions Past Performance

## Pennsylvania Department of Education Teacher Vaccination

AMI was contracted by the Pennsylvania Emergency Management Agency (PEMA) to assist the Department of Education to operate and administer doses at 28 Intermediate Unit sites resulting in 112,000 teachers and school workers vaccinated in Pennsylvania in less than 3 weeks. AMI also established and conducted a mass vaccination clinic at Penn State University and deployed mobile vaccination teams to respond to demands for vaccination services to socially vulnerable individuals and targeted groups within the Commonwealth.

## Commonwealth of Pennsylvania COVID-19 Testing

AMI provides COVID-19 sample collection as part of statewide effort under the Department of Health. Under the Pennsylvania Approved COVID-19 Testing Sites (PaACTS) program, AMI established a network of approved testing sites within 6 regions. The network facilitated access to a broader population across the Commonwealth increasing the number of daily tests.

## Bucks County Pennsylvania Office of Emergency Services

Over the summer of 2021, AMI coordinated and deployed mobile vaccination clinics to reach 7 schools in various districts administering a total number of 1300+ doses to students and staff. AMI managed four vaccination clinics with the capacity to administer 1,000 vaccination per day. Three clinics were set up at community colleges. Since February 2021, our staff have vaccinated over 155,440 residents.

## Wisconsin Department Of Health Services (WisDHS)

AMI has partnered WisDHS to expand vaccine accessibility by operating community-based vaccination clinics at three regional sites. Working closely with Wisconsin National Guard, Wisconsin Emergency Management Agency, and local public health partners, AMI provides program management and full clinical support for mass vaccination as well as targeted mobile clinics for underserved and remote populations. AMI has partnered with the Wisconsin School of Pharmacy at Concordia University to train pharmacy students to support mass vaccination efforts.

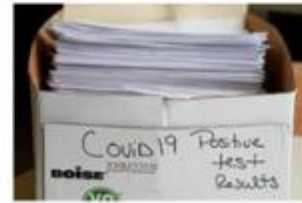


# Healthcare Management Records



To support the California schools testing effort, AMI is proud to introduce a healthcare information system (IT) capability from our teaming partner **TrackMy Solutions** called TrackMy Lab Results. TrackMy Lab Results platform provides mechanisms for the registration/scheduling, recording, lab results tracking, reporting, and workflow management, TrackMy Lab Results platform and IT backbone fully complies with all HIPAA requirements. TrackMy Lab Results was released in March 2021, with the intent to meet the emerging digital passports for COVID-19 testing results community needs.

## The Solution – TrackMy Lab Results



- Manual Result Notification and Reporting
- No Reminders
- Single Copy
- Not Secure

- Digital Results
- MyLab Result Passport
- Reminders/Alerts
- Cloud Accessible
- Secure

*TrackMy Lab Results Overview. TM Lab Results Software Capabilities can integrate with any COVID test manufacturer process; i.e. – Rapid antigen, antibody, PCR.*

## Workflow View



*TrackMy Lab Results Modules Features. User or provider able to register through secure login to capture base demographics for state-level reporting requirements – Race, Ethnicity, Sex*



# Key Personnel

---



## **DR. THOMAS CRABTREE, WMD, FACS - GLOBAL MEDICAL DIRECTOR**

Dr. Thomas G. Crabtree, MD, FACS is the Group Medical Director. Prior to forming AMI, he retired as a Colonel from the US Army. During his military career, Dr. Crabtree served as a trauma and reconstructive surgeon in multiple domestic, overseas, and combat settings. He was also seconded to the UN on several occasions to support various Department of Peacekeeping Operations missions. Dr. Crabtree led large-scale AMI efforts running multiple USAID supported Ebola Treatment Units across Western Africa and served as a clinical director of three WHO Trauma and Maternity Hospitals in Mosul. Dr. Crabtree is a graduate of Harvard University and Stanford University School of Medicine.



## **SCOTT F GIBERSON, RPh, MPH, D.Sc. - EXECUTIVE DIRECTOR OF CORPORATE AFFAIRS**

Rear Admiral (retired) Scott Giberson is a uniquely experienced public health leader. After nearly 27-years, he retired as a two-star Admiral, Assistant U.S. Surgeon General for 11 years, and acting Deputy Surgeon General of the U.S. (2013-2014). He held leadership roles within multiple U.S. Departments and has successfully led organizations and agencies through global and domestic health crises. At AMI, he continues as part of the executive team to help lead strategy, provide clinical and public health solutions and expertise, and foster global client relations at the highest levels



## **JOHN DETERDING - FOUNDER AND CEO**

John Deterding, a U.S. Navy veteran, and a graduate of the United States Naval Academy (B.S.) and the University of California, Berkeley School of Law (J.D.), serves as Maclean Health's Chief Executive Officer. After serving 10 years in the U.S. Navy, and before founding Maclean, Mr. Deterding worked as an Account Engineer at one of the preeminent chemical engineering companies in the world, supplying critical services and equipment to both commercial and government clients.



## **TONY CAMPOS - FOUNDER AND COO**

Prior to founding Maclean Health, Tony served as an Executive at a digital healthcare tech company (ConsejoSano), responsible for patient engagement with a focus on diversity & inclusion for Medi-Cal beneficiaries. Previously, he worked as an investor at Primary Ventures, which focused on high growth digital health companies. Tony comes from a first-generation Mexican-American family in Sacramento, where his father was an educator for 43 years and his mother worked for First 5 California for 14 years. Tony holds a B.S. degree from Georgetown University and an MBA from The Wharton School, University of Pennsylvania.



*“Public health experts said the frequency and scale of LAUSD’s testing is appropriate given the threat of the Delta variant. The [Centers for Disease Control and Prevention](#) recommends that districts in moderate- to high-transmission areas offer testing at least once per week to students who are not fully vaccinated.”*

Link: <https://www.latimes.com/california/story/2021-08-16/lausd-plan-to-test-students-teachers-weekly>

Contact: [info@macleanhealth.com](mailto:info@macleanhealth.com)



# Questions?

The screenshot displays the audio control panel of a GoToWebinar session. At the top, there is a menu with 'File', 'View', and 'Help'. Below it, the 'Audio' section is active, showing 'Sound Check' with a green signal indicator. Two radio buttons are present: 'Computer audio' (selected) and 'Phone call'. A microphone icon is shown with the word 'MUTED' in red. Below this, a dropdown menu shows 'Transmit (Plantronics Savi 7xx-M)'. A volume slider is visible, followed by another dropdown menu for 'Receive (Plantronics Savi 7xx-M)'. The current speaker is identified as 'Talking: Liz Davis'. A red rectangular box highlights the 'Questions' panel, which contains a text input field with the placeholder text '[Enter a question for staff]' and a 'Send' button. At the bottom of the interface, the text 'Webinar Housekeeping' and 'Webinar ID: 608-865-371' is displayed, along with the GoToWebinar logo.



# Thank you



**California School Boards Association**  
3251 Beacon Boulevard, West Sacramento, CA 95691  
[www.csba.org](http://www.csba.org) | 800.266.3382